

# Matching Bug Facts Game

Draw a line connecting each bug to the correct fact blurb!

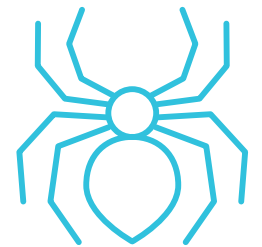
## #1

I am the deadliest animal on Earth! Only females of my species bite you, because the males feed on flower nectar and juices! I can detect CO<sub>2</sub> from 75 feet away, and my wing beat over 300 times per second! What am I?



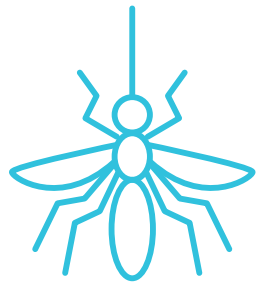
## #2

I can survive 24 hours underwater. I don't have lungs, but I breathe through small holes around my body called spiracles. I communicate using pheromones, and build huge colonies using tunnels. There are over 10 quadrillion of my species alive on the earth at any time! What am I?



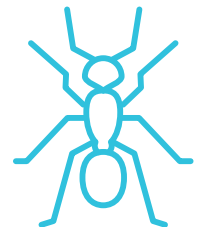
## #3

Millions of my species travel to Mexico for the winter, some over 3,000 miles. I lay my eggs on milkweed plants so that a poisonous toxin makes my larvae taste bad to predators. I can't fly if my body temperature is under 86 degrees, so I "shiver" until my wings to warm up! I need human help and protection. What am I?



## #4

I never sleep! I am responsible for pollinating 80% of all fruit, vegetable, and seed crops in the USA, that's 1/3 of the national food supply! I fly 15 miles per hour and my colony visits 2 million flowers to make one pound of honey. I need human help and protection. What am I?



## #5

I produce silk that is stronger and tougher than steel by weight. 1 million of my kind occupy any given acre of land (3 million in the tropics). It is estimated that no human is ever more than 10 feet away from one of me. I can lay up to 3,000 eggs at once, but I am not an insect. What am I?

